

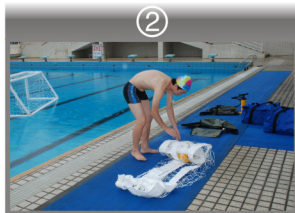
INSTALLATION INSTRUCTION OF PORTABLE AND INFLATABLE WATER POLO GOAL

PACKING INSTRUCTION OF PORTABLE AND INFLATABLE WATER POLO GOAL

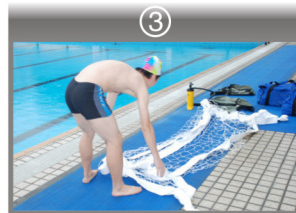
INSTALLATION INSTRUCTION



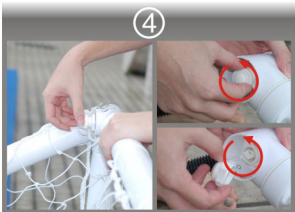
Step1: Put the bag on the ground.



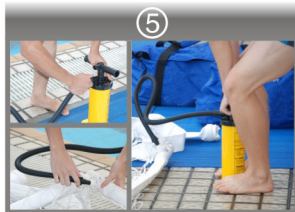
Step2: Unzip the bag, take out the goal and the air pump.



Step3: Put the water pool goal on the open area near the pool, spread the posts and net (Make sure net and supporting ropes are not caught on connectors).



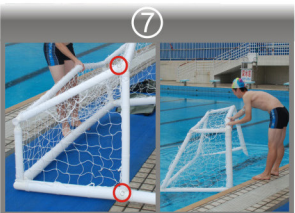
Step4: Before inflation, unseal the cover of valve at the left bottom of one post, turn the valve fully anti-clockwise in case of air leakage after it is pumped up.



Step5: use the hose to connect the lower hole of the air pump (For air out) with the valve on the goalpost. Put the feet on the foot plates, hands hold the handle of the air pump, inflate the posts until it is fully enough.

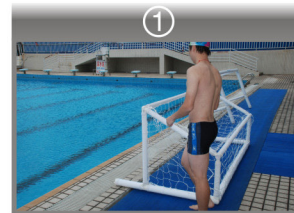


Step6: After inflation, pull off the hose, screw the cover of the valve tightly. Then finish.

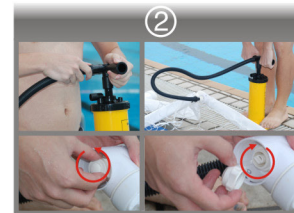


Step7: To ensure the water polo goal can float in water firmly, there are two connection rings in both sides of the goal, you can link the waterline with these connection rings to steady the goal. End

PACKING INSTRUCTIONS



Step1: After playing, then put the goal back on the floor.



Step2: Unseal the cap of the valve at the left bottom of the post, turn the valve fully clockwise and then push it for releasing air. To make it more easy to pack, you could also use the pump to bleed the air in tubes. Firstly use the hose to connect the upper hole of the pump and the valve on the goalpost. Then put feet on the foot pedals, drive the handle of the pump up and down.



Step3: After deflation, turn valve fully anti-clockwise again in case the air input again. Then seal the cover of valve.



Step4: Organize the net and post of water polo goal as before playing, tie up the package with the sand bags and string. Put the pump onto the centre of the goal.



Step5: Roll up the goal and pump together, put them together into the carry bag.



Step6: close top zippers first, then side zippers after any protruding parts are back inside the bag, then the packing is finished.



THINGS TO NOTE

- 1. This step 2 and the direction of whole field must be confirmed.
- 2. Pay attention to the sharp stuff and do not injury water pool field.
- 3. The product can not be dragged on the ground, in case the connector and tube worn-out and leak.
- 4. Draining the air out as much as possible to decrease the volume of the package, and more easily to be put into the bag.
- 5. Do not expose the product to chemical composition.